

### ESSENTIAL SERIES

Color	Group
White lam. (WHT)	1
Antique White lam. (AWH)	2
Light Maple lam. (LMP)	2
Medium Cherry lam. (MCH)	2
Honey Maple Monaco (HMM)	3
Medium Maple Monaco (MMM)	3

- Laminate or hybrid ply, 3/4" thick
- Furniture board core for lam & hybrid ply for Group #3
- Rigid Thermofoil Classic Raised Panel Doors & Drawer Fronts for lam.; Monaco style for Group #3
- Full-extension drawer slides



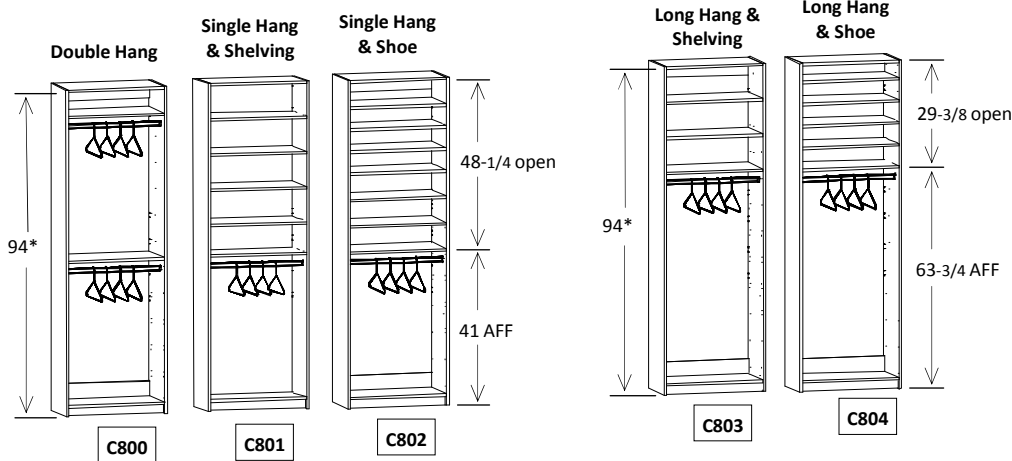
### SIGNATURE SERIES

Color	Group
Honey Glazed Maple (HGM)	1
Glazed Ash White (GAW)	1
Glazed Bisque Ash (GBA)	1
Distressed Sage Green (DSG)	1
Distressed Midnight Black (DMB)	1
Distressed Linen Yellow (DLY)	1
Custom Color-Maple/Cherry (CCM / CCC)	2

- Real Wood Veneer, 7/8" thick
- 12-Layer Plywood core
- 5-piece or 9-piece doors & drawer fronts
- Widths are 3/8" wider than "nominal" width
- 3 mm solid wood edge
- Full-extension soft-close drawer slides

## I: 8' TALL HANGING CABINETS

Available in 12", 16", 20", & 24" depths

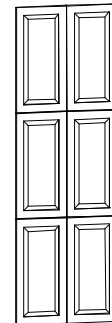


All cabinets are available in 18", 24", 30", & 36" widths.

\*8' Tall Cabinets are 94" & part # starts with C8; 7' Tall Cabinets are 86-1/2" & part # starts with C7.

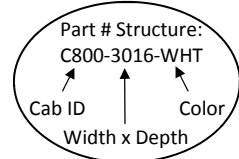
Reduce width of any shelving or hanging unit to non-standard width (in 1" increments) See pg. 10

**Door Kit #1**  
(for full-height coverage)



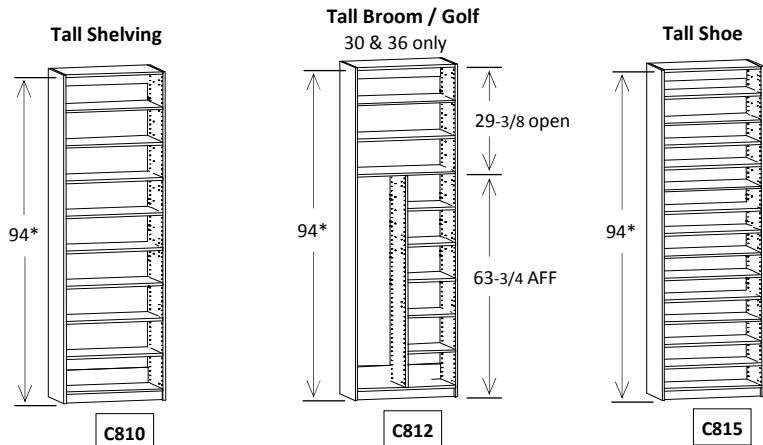
**CAUTION:** Doors for hanging units should only be added to 24" deep units.

Part #	For use on
DKIT1A	C800 to C815
DKIT1B	C700 to C715



## II: 8' TALL SHELVING CABINETS

Available in 12", 16", 20", & 24" depths



### III: 8' TALL CABINETS WITH DRAWERS

**C820**      **C821**

Drawer Front Heights → 4 @ 7-3/8"      1 @ 7-3/8"      2 @ 11-1/4"

All cabinets are available in 18", 24", 30", & 36" widths.

**Door Kit #2**  
(for full coverage above drawers)

**C828**      **C829**      **C830**

6 @ 7-3/8"      3 @ 7-3/8"      4 @ 11-1/4"  
2 @ 11-1/4"

Part #	For use on
DKIT2A	C820 & C821
DKIT2B	C828, C829, C830, C724, & C725
DKIT2C	C824, C825, C720, & C721

**C824**      **C825**

Drawer Front Heights → 5 @ 7-3/8"      2 @ 7-3/8"      2 @ 11-1/4"

\*8' Tall Cabinets are 94" & part # starts with C8; 7' Tall Cabinets are 86-1/2" & part # starts with C7.

**Talls with Short Doors**

**C824DP**      **C825DP**

5 @ 7-3/8"      2 @ 7-3/8"      2 @ 11-1/4"

Part # Structure: C800-3016-WHT

↑                    ↑                    ↑

Cab ID            Color

Width x Depth

### IV: 8' TALL CABINETS WITH MIRRORED DOORS

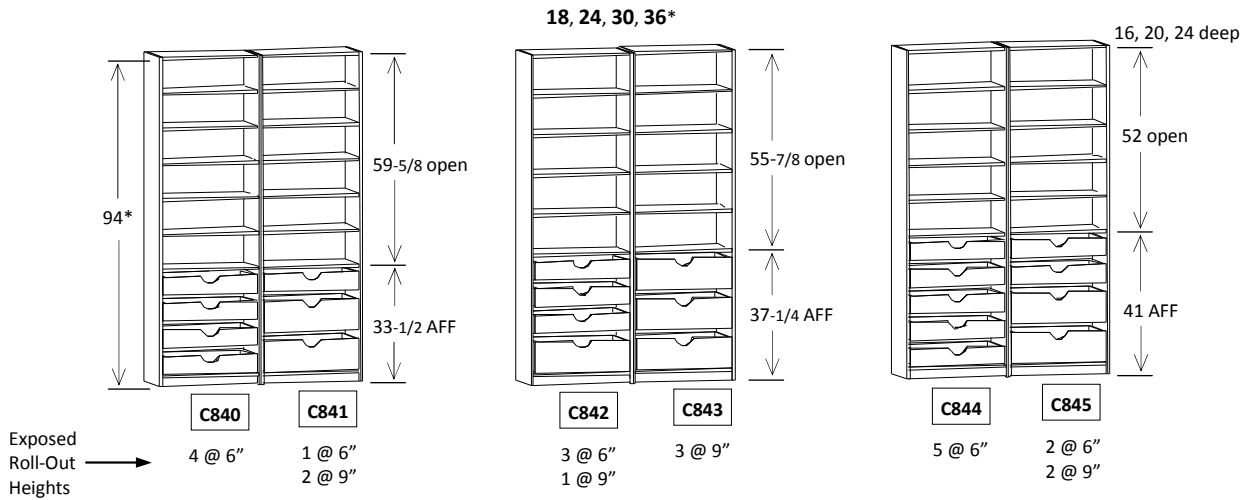
**C854**

**C855**

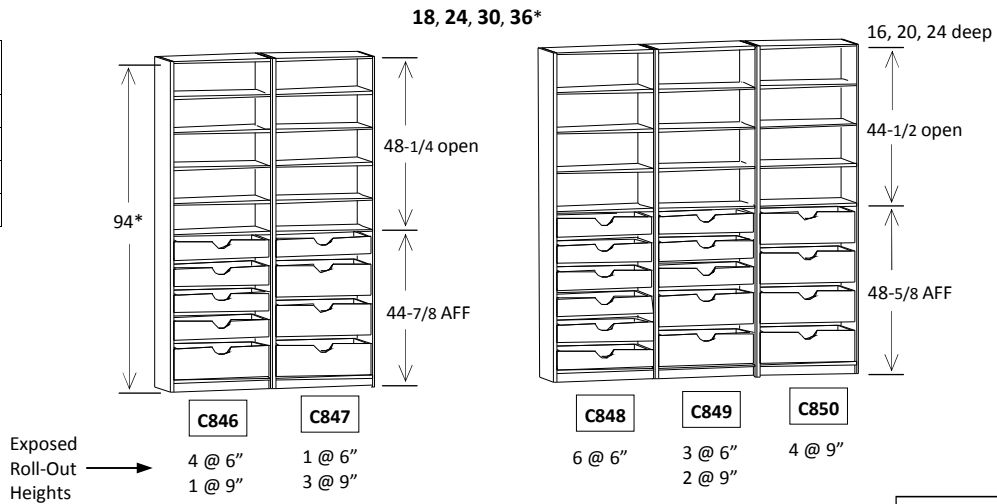
**C856**

\*For 7' application (86-1/2" high), tall cabinets with mirrored doors [C754, C755, & C756] have a 7-3/8" drawer at bottom (no doors at top).\*

### V: 8' TALL CABINETS WITH EXPOSED ROLL-OUT SHELVES



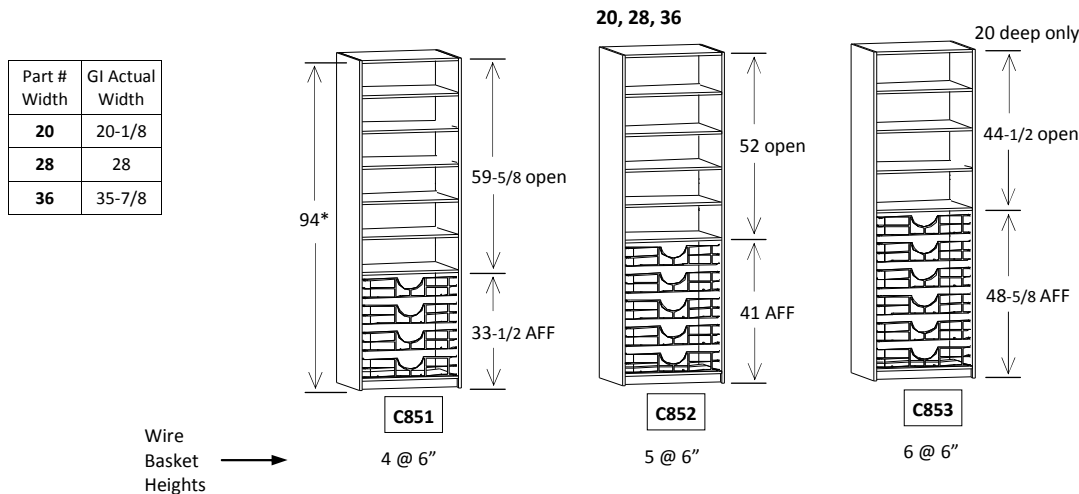
Part #	GI Actual Width
18	19
24	25
30	31
36	37



All cabinets with exposed roll-out shelves available in 16", 20", & 24" depths.

\*8' Tall Cabinets are 94" & part # starts with C8; 7' Tall Cabinets are 86-1/2" & part # starts with C7.

### 8' TALL CABINETS WITH WIRE BASKETS

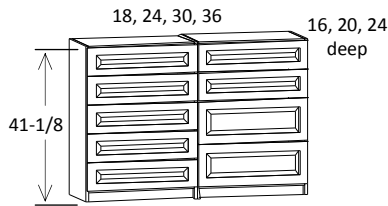


Part #	GI Actual Width
20	20-1/8
28	28
36	35-7/8

Part # Structure:  
C800-3016-WHT  
Cab ID      Color  
Width x Depth

### VI: BASE TYPE CABINETS

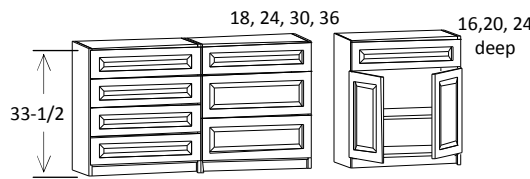
#### Dresser Height



**C470**      **C471**

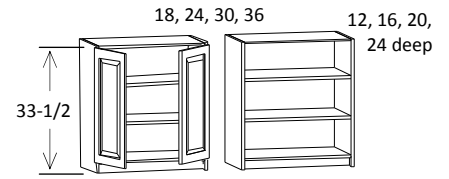
Drawer Front Heights → 5 @ 7-3/8"      2 @ 7-3/8"      2 @ 11-1/4"

#### Base Height



**C272**      **C273**      **C274**

4 @ 7-3/8"      1 @ 7-3/8"      1 @ 7-3/8"  
2 @ 11-1/4"      2 @ 11-1/4"

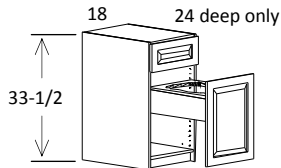


**C275**      **C276**

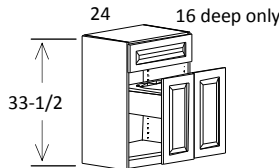
**CAUTION: All 7/8" cabinets are 3/8" wider than nominal widths.**

#### Clothes / Linen Hamper Cabinets

##### Single Clothes Hampers

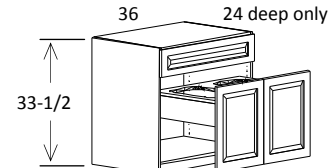


**C274CS-1824**



**C274CS-2416**

##### Double Clothes Hamper

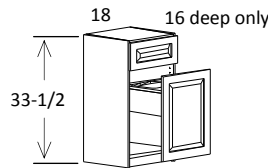


**C274CD-3624**

Modify / Add to Tall Cabinets	
Part #	Description
MOD-SGCH1816	Single Garbage Can Holder (fits in 18" x 16" deep cab)
MOD-DGCH1824	Double Garbage Can Holder (fits in 18" x 24" deep cab)
MOD-SLH1824	Single Clothes/Linen Hamper (fits in 18" x 24" deep cab)
MOD-SLH2416	Single Clothes/Linen Hamper (fits in 24" x 16" deep cab)
MOD-DLH3624	Double Clothes/Linen Hamper (fits in 36" x 24" deep cab)

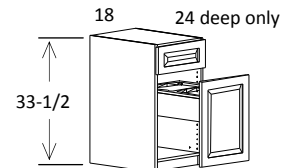
#### Garbage Can Holder Cabinets

##### Single Garbage Can Holder



**C274GS-1816**

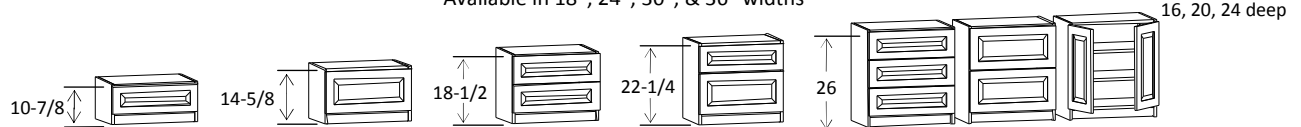
##### Double Garbage Can Holder



**C274GD-1824**

#### Bench / Window Seats / Entertainment Heights

Available in 18", 24", 30", & 36" widths

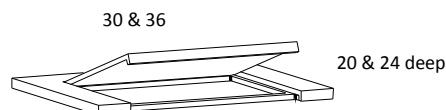


**C490**      **C491**      **C492**      **C493**      **C494**      **C495**      **C496**

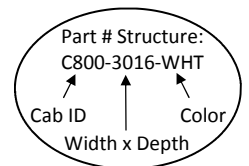
Drawer Front Heights → 1 @ 7-3/8"      1 @ 11-1/4"      2 @ 7-3/8"      1 @ 7-3/8"      3 @ 7-3/8"      2 @ 11-1/4"      N/A  
1 @ 11-1/4"

#### Bench / Toy Chest Lid

(Pricing includes modification of any base type cabinet on this page.)



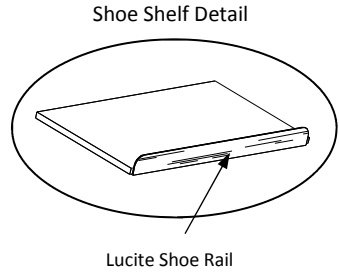
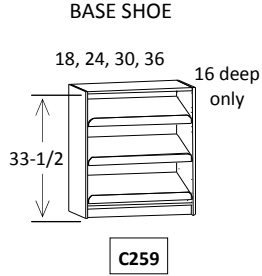
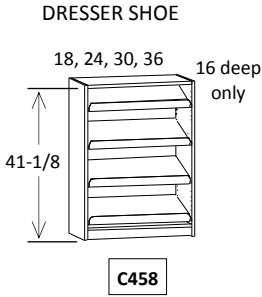
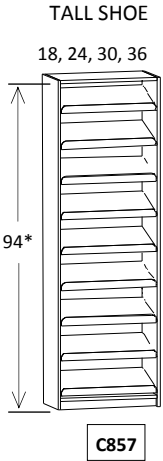
**BLID**



### VII: ANGLED SHOE CABINETS

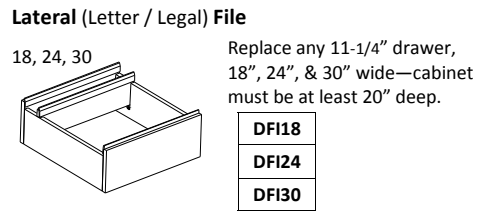
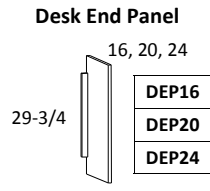
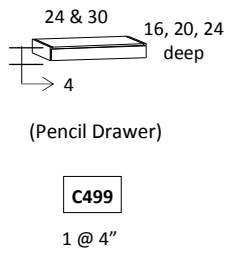
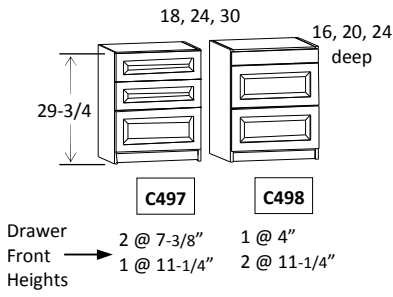
**CAUTION: All 7/8" cabinets are 3/8" wider than nominal widths.**

All cabinets are available in **18", 24", 30", & 36" widths.**

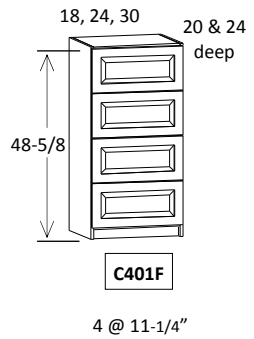
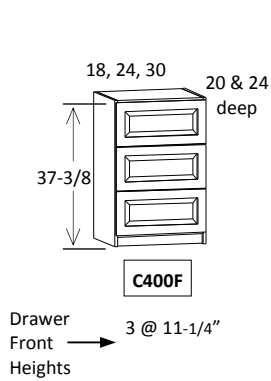
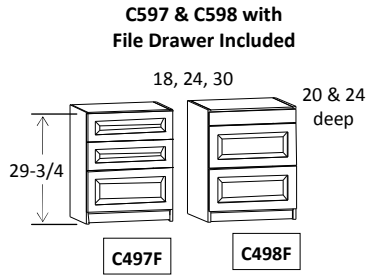


\*8' Tall Cabinets are 94" & part # starts with C8; 7' Tall Cabinets are 86-1/2" & part # starts with C7.

### VIII: DESK & FILE CABINETS

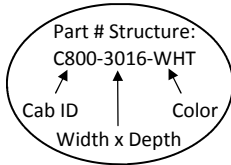


#### File Cabinets



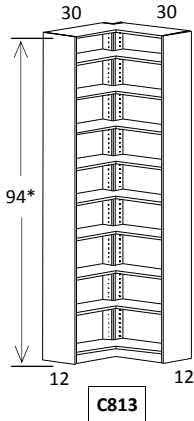
All Desk / File cabinets require countertops.

**CAUTION: All 7/8" cabinets are 3/8" wider than nominal widths.**



### IX: 8' TALL SPECIALTY CABINETS

**30" Corner "Pie-shaped" Shelving Cabinet**



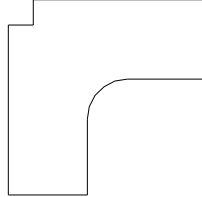
**C813**

**30" Corner "Pie-shaped" Shoe Cabinet**

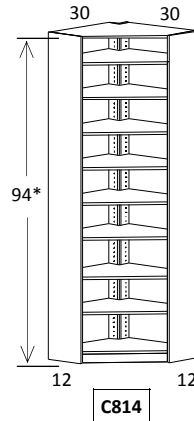
(not pictured; same as C813, but has 11 shelves)

**C813S**

Corner "Pie-shaped" Cabinet Top Diagram



**30" Corner "Diagonal" Shelving Cabinet**



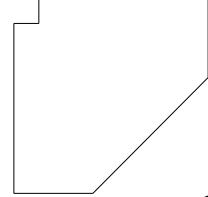
**C814**

**30" Corner "Diagonal" Shoe Cabinet**

(not pictured; same as C814, but has 11 shelves)

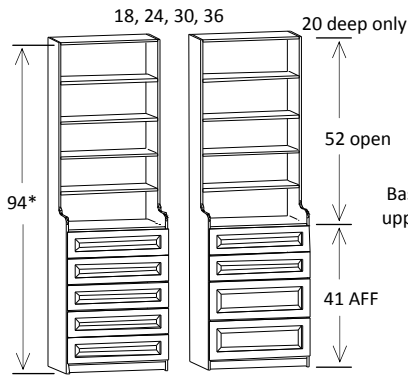
**C814S**

Corner "Diagonal" Cabinet Top Diagram



**CAUTION: All 7/8" cabinets are 3/8" wider than nominal widths.**

### Hutch Cabinets

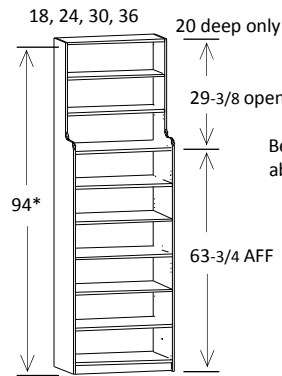


**C824H**

**C825H**

Base section is 20" deep; upper section is 12" deep.

### Header Notch Cabinet



**C810N**

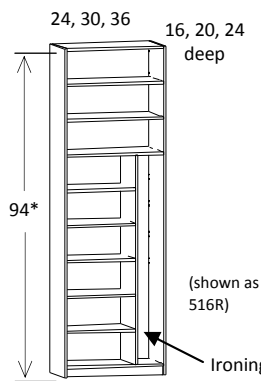
Below notch is 20" deep; above notch is 12" deep.

Drawer Front Heights  
 → 5 @ 7-3/8"  
 2 @ 7-3/8"  
 2 @ 11-1/4"

\*8' Tall Cabinets are 94" & part # starts with C8; 7' Tall Cabinets are 86-1/2" & part # starts with C7.

### Ironing Board Cabinets

**Tall Shelving w/ Ironing Board**



**C816L**

**C816R**

**Fold-away Ironing Board**

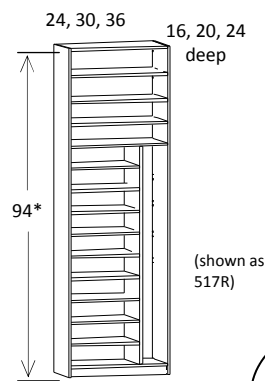


Fold-down leg supports adjust 3" for leveling, hydraulic soft close retracting mechanism. Includes canvas ironing board cover. Board is 13-1/5" W x 38" L, available in black pearl finish. Included in cabinets C816, C817, C716, & C717 or fits on end of cabinet.

**FIB**

For cabinets C816, C817, C716, & C717, L or R designates ironing board side.

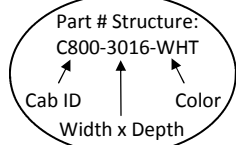
**Tall Shoe w/ Ironing Board**



**C817L**

**C817R**

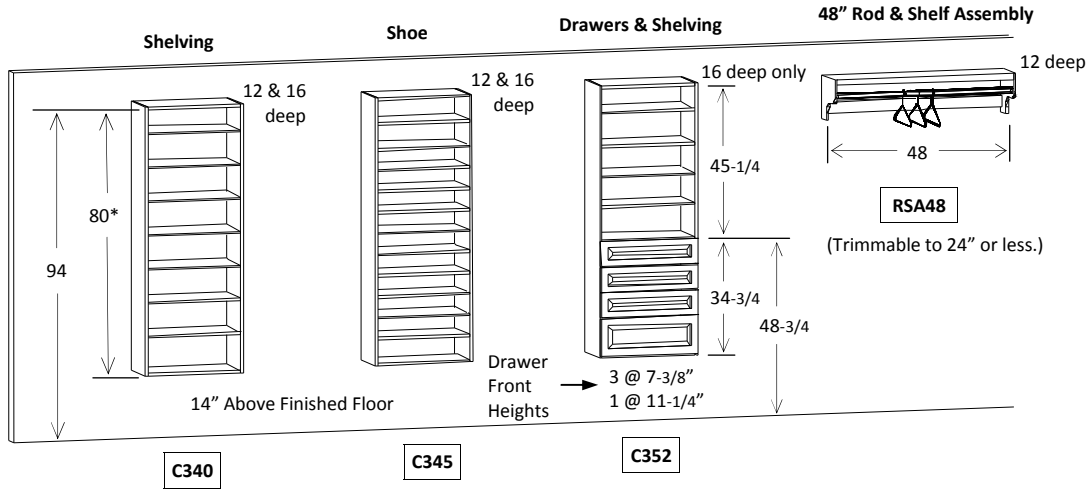
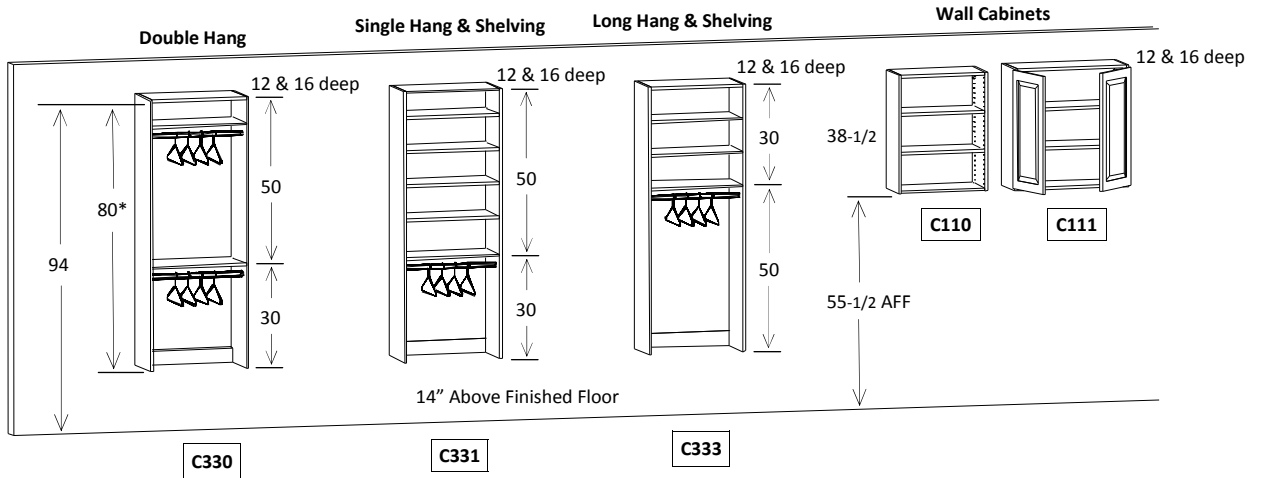
(shown as 517R)



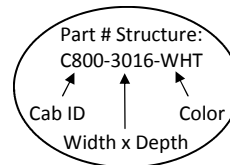
### X: "3-QUARTER" / 8' CABINETS & WALL CABINETS

Available in 18", 24", 30", & 36" widths

(For "3-Quarter" / 8' cabinets that have hanging sections, clothes will hang below bottom of panel.)



**Note:** "3-Quarter", "Half", & Wall cabinets are great to use where obstructions are present (i.e. baseboard, HVAC, vents, etc.).



### XI: MOULDINGS, FILLERS, & DECORATIVE COMPONENTS

#### 4" Filler / Cleat

(Edgebanded on all 4 edges.)

F4-96

96

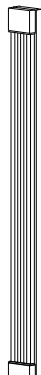


4

#### Fluted Fillers

FFL-T86  
FFL-T94

86-1/2  
94



3

Base Type

specify height\*\*

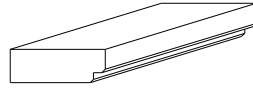


3

FFL-B\_\_

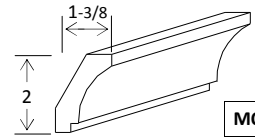
\*\*Place height at end of part #; example: 33-1/2" H = FFL-B33

#### 2-1/4" Cap Mould—8' length



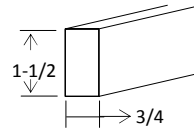
MO-CAP-225

#### #200 Cove Crown—8' length



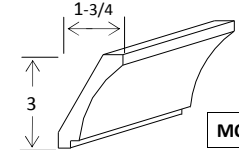
MO-CRC200

#### Cleat Material (S4S) (unfinished)



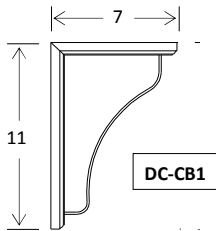
MO-S4S-150

#### #300 Cove Crown—8' length



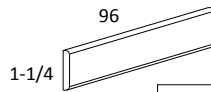
MO-CRC300

#### Basic Corbel #1



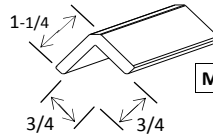
DC-CB1

#### 1-1/4" Large Scribe / Shoe



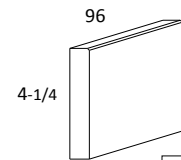
MO-SCSH-125

#### Outside Corner—4' length (3/4" coverage)



MO-OC-075

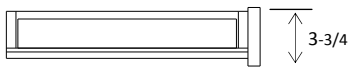
#### 4-1/4" Plant on Toe Board / Crown Base—Beveled



MO-POTBB

### XII: ACCESSORIES & ADD-ONS

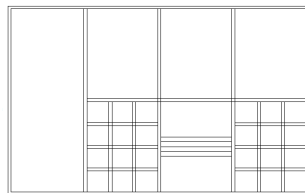
#### Jewelry Tray Drawer



JTD24  
JTD30

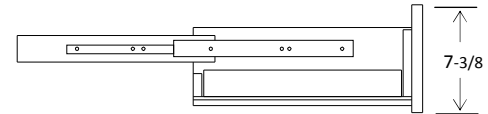
- Black velvet lined tray.
- Tray is attached to 3-3/4" tall drawer front.
- Requires minimum 16" deep cabinet.

#### Schematic for All Jewelry Trays



Layout #25

#### Jewelry Drawer Double Insert



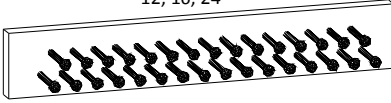
JDDI24  
JDDI30

- Quantity of 2 black velvet lined trays.
- Fits in 7-3/8" tall drawer.
- Requires minimum 16" deep cabinet.

## XII: ACCESSORIES & ADD-ONS

### Tie Rack: Wall-mount & Slide-out

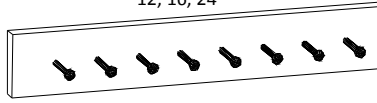
12, 16, 24\*



Wall-mount Part #	Slide-out Part #	# of Hooks
WTR12	STR12	23
WTR16	STR16	31
WTR24	STR24	47

### Belt Rack: Wall-mount & Slide-out

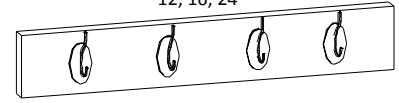
12, 16, 24\*



Wall-mount Part #	Slide-out Part #	# of Hooks
WBR12	SBR12	6
WBR16	SBR16	8
WBR24	SBR24	12

### Robe / Coat Rack: Wall-mount & Slide-out

12, 16, 24\*

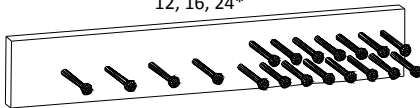


Wall-mount Part #	Slide-out Part #	# of Hooks
WRR12	SRR12	3
WRR16	SRR16	4
WRR24	SRR24	5

\*Actual size of all racks are 1" larger than specified, i.e. 24 = 25". All Wall-mount & Slide-out Racks are available in all colors; pins / hooks are polished chrome.

### Belt & Tie Combo Rack: Wall-mount & Slide-out

12, 16, 24\*



Wall-mount Part #	Slide-out Part #	# of Belt Hooks	# of Tie Hooks
WBTR12	SBTR12	3	11
WBTR16	SBTR16	4	15
WBTR24	SBTR24	6	23

### Sliding Valet Rod—12"



SVR12-PC

- For use on 12" & 16" depth panels.
- Available in polished chrome.

### Acrylic Dividers for Shelf

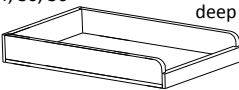


ASD1208

- Measures 12" deep x 8" high.
- For use on 12" & 16" deep shelves.

### Roll-Out Shelves for pantries (UV Birch Plywood)

18, 24, 30, 36  
3-1/2  
16, 20, 24 deep



Includes ball-bearing full-extension slide for installation.

RO-18	__
RO-24	__
RO-30	__
RO-36	__

### Holder for Ironing Board (available in white [WH] only)



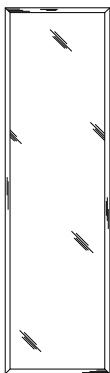
HIB-WH

### Holder for Iron / Ironing Board (available in white [WH])



HIIB-WH

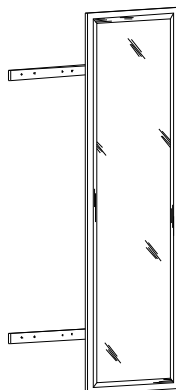
### Beveled Mirror—14" x 54"



BM1454

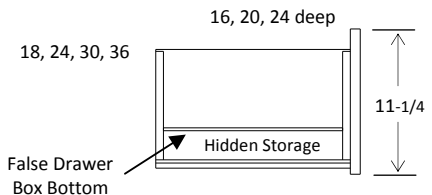
### Slide-Out Mirror

(uses 14" x 54" Beveled Mirror; requires minimum 16" deep cabinet side)



SOM

### False Drawer Box Bottom



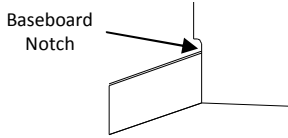
FDBB\_\_

- For use in 11-1/4" drawers
- Has 2-1/2" "hidden" storage

### XIII: STANDARD MODIFICATIONS (pricing does NOT change with cabinet color)

#### Baseboard Notch

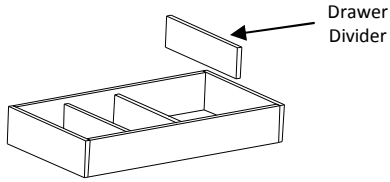
(machined in (2) cabinet sides)



MOD-BN

#### "Add" Dividers to Drawer box

(Front to Back)



MOD-ADBDIV

#### "Add" Pull-Down Rod



MOD-APDR30

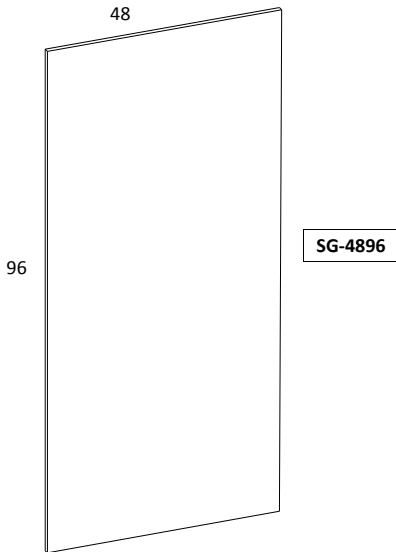
MOD-APDR42

ITEM	DESCRIPTION	PART #
Custom Cabinet Height	Modify cabinet to height other than standards	MOD-CCH( )
Order Flat Packed	Cabinets come unassembled	MOD-OFP
Reduce Width	Shelving & Hanging Units widths can be reduced by 1" increments	MOD-RW_
Line-bore / Machine Both Sides of Cabinet Side	Holes drilled on both sides of cabinet side for adding bridge kits between cabinets; priced per cabinet side	MOD-LB2SCS
Lock	Lock for doors or drawers	MOD-LOCK

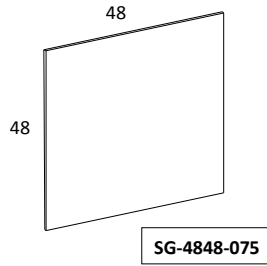
Attaches to interior cabinet sides. Weight capacity is 33 lbs. Made of aluminum & is available in brushed chrome with black accents. PDR30 adjusts to fit cabinets from 24" to 30"; PDR42 adjusts to fit cabinets from 33" to 42". If installed in 16" deep cabinet, 42" of clearance is required in front of cabinet to function.

## XV: SHEET GOODS & SAMPLES

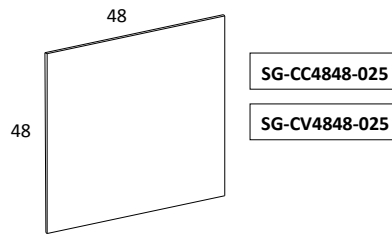
1/8" or 1/4" Backer Sheet 48" x 96"



3/4" Sheet Good 48" x 48"



1/4" Aromatic Cedar Composite Panel & Veneer Panel 48" x 48"

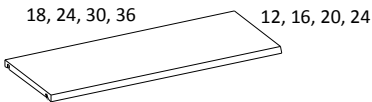


**Backs**

Type	Width	Part #
8' Tall (94")	18	SG-1894
	24	SG-2494
	30	SG-3094
	36	SG-3694
7' Tall (86-1/2")	18	SG-1886
	24	SG-2486
	30	SG-3086
	36	SG-3686
Wall (38")	18	SG-1838
	24	SG-2438
	30	SG-3038
	36	SG-3638
Base (33-1/2")	18	SG-1833
	24	SG-2433
	30	SG-3033
	36	SG-3633
Bench (18-1/2")	18	SG-1818
	24	SG-2418
	30	SG-3018
	36	SG-3618

**Fixed Shelves**

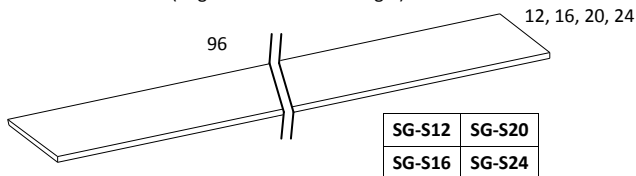
(with cams at each end)



FS1812	FS1816	FS1820	FS1824
FS2412	FS2416	FS2420	FS2424
FS3012	FS3016	FS3020	FS3024
FS3612	FS3616	FS3620	FS3624

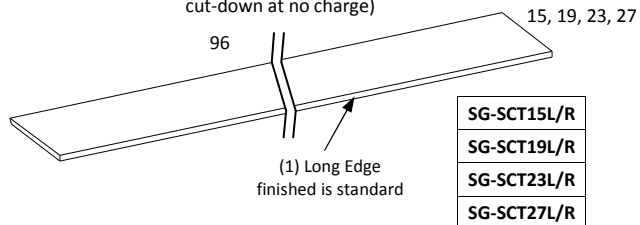
**Shelf Blank**

(Edgebanded on front edge.)

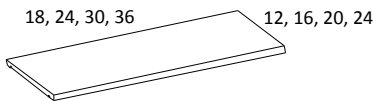


**Crown Top Shelf Blank**

(Specify finished end [L/R]; can be cut-down at no charge)

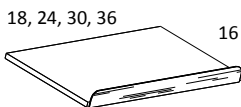


**Adjustable Shelves / Connecting Shelves**



AS1812	AS1816	AS1820	AS1824
AS2412	AS2416	AS2420	AS2424
AS3012	AS3016	AS3020	AS3024
AS3612	AS3616	AS3620	AS3624

**Shoe Shelf 16" depth**



SS1816
SS2416
SS3016
SS3616

**Bridge Kits**

(Shelving & Hanging)

- Same shelving & hanging configurations as page 1 cabinets.
- Available in 18", 24", 30", & 36" widths; these widths can be trimmed to fit.
- Available in 12", 16", 20", 24" depths
- Kits go between 2 cabinets; the cabinets' sides should be modified with line-bore on both sides of panels that bridge kit will fit between (MOD-LB2SCS).

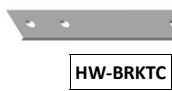
C800K-___	C803K-___	C815K-___
C801K-___	C804K-___	
C802K-___	C810K-___	

### XVI: HARDWARE & SUPPLIES FOR "DIY CUSTOMERS"

**L-Bracket**



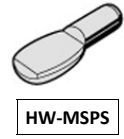
**Connector Bracket**



**2" Dia. Grommet**



**Shelf Pins—Spoon-shaped**  
(20 per pack)



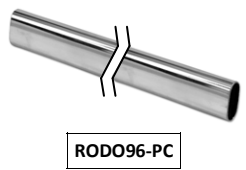
**Color Sticks**



**Closet Rod Bracket for Oval rod**  
(Polished Chrome finished)



**Oval Rod—8' length**  
(Polished Chrome finish)



**Rod Cup for DIY**  
(1 pair per pack)



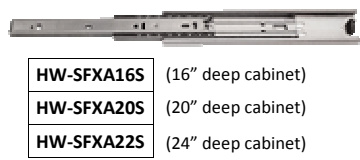
**Rod Cup for System hole**  
(1 pair per pack)



**Rod & Cups Kits**  
(for use in 18", 24", 30", & 36" width cabinets)

Width	Part #
18	RCKIT18
24	RCKIT24
30	RCKIT30
36	RCKIT36

**Accuride Type Full-Extension Soft-close Drawer Slides**



**Robe / Coat / Hat Hook**  
Available in satin nickel finish.



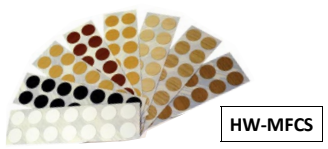
**1-3/8" Cabinet Connector Screws**  
(20 per pack)



**2-1/2" Installation Screws**  
(20 per pack)



**Fast Cap Stickers**  
(14 covers per sheet)



For those who install with sheet rock screws, use these to cover screws.

**Standard Pull**



**Standard Knob**

